

Scale (mm) 1:2

Notes:

1. Lead Base Metal - Copper \square lin 194
2. Lead Finish

Std PN - Sn/Pb Sn \Rightarrow 80%

Z Option - 100% Matte Sn - .010 (.0004) min thk

UNLESS OTHERWISE SPECIFIED,
DIMENSIONS ARE IN mm (Inches)
PER ANSI Y14.5M-1982.
TOLERANCES ARE:
DECIMAL ANGLE
.XX $\pm .12$ (.005) $\pm 1/2^\circ$
.XXX $\pm .05$ (.002)

MATERIAL(S):

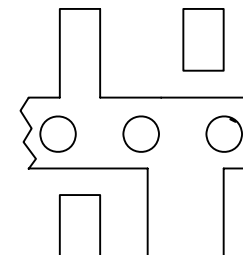
See Notes

FINISH:

See Notes

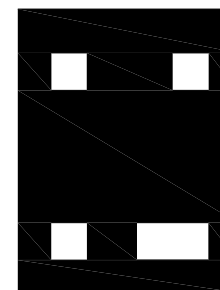
- Do Not Scale Hard Copy -

Caution: The Land Patterns and Solder Mask shown are generic for this package. Refer to product data sheet for any required variations specific to an application.



Scale (mm) 1:2

- Generic Land Pattern -



Scale (mm) 1:2

- Generic Solder Mask Opening -

SIRENZA
MICRODEVICES

Package Type:

SOT-343 (SC70-4) Pins 2 & 4 Fused

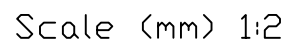
SMDI Package Type: XXX-XX43

Dwg No.

MP0-100139

Sht
1 of 2

REV
C



Technical drawing of a mechanical part with dimensions:

- Top horizontal dimension: 1.66 [0.065]
- Top horizontal dimension (inner): .90 [0.035]
- Right vertical dimension (inner): 1.36 [0.054]
- Right vertical dimension (outer): 2.20 [0.087]
- Bottom horizontal dimension: .75 [0.030]

Scale (mm) 1:2

- Do Not Scale Hard Copy -

