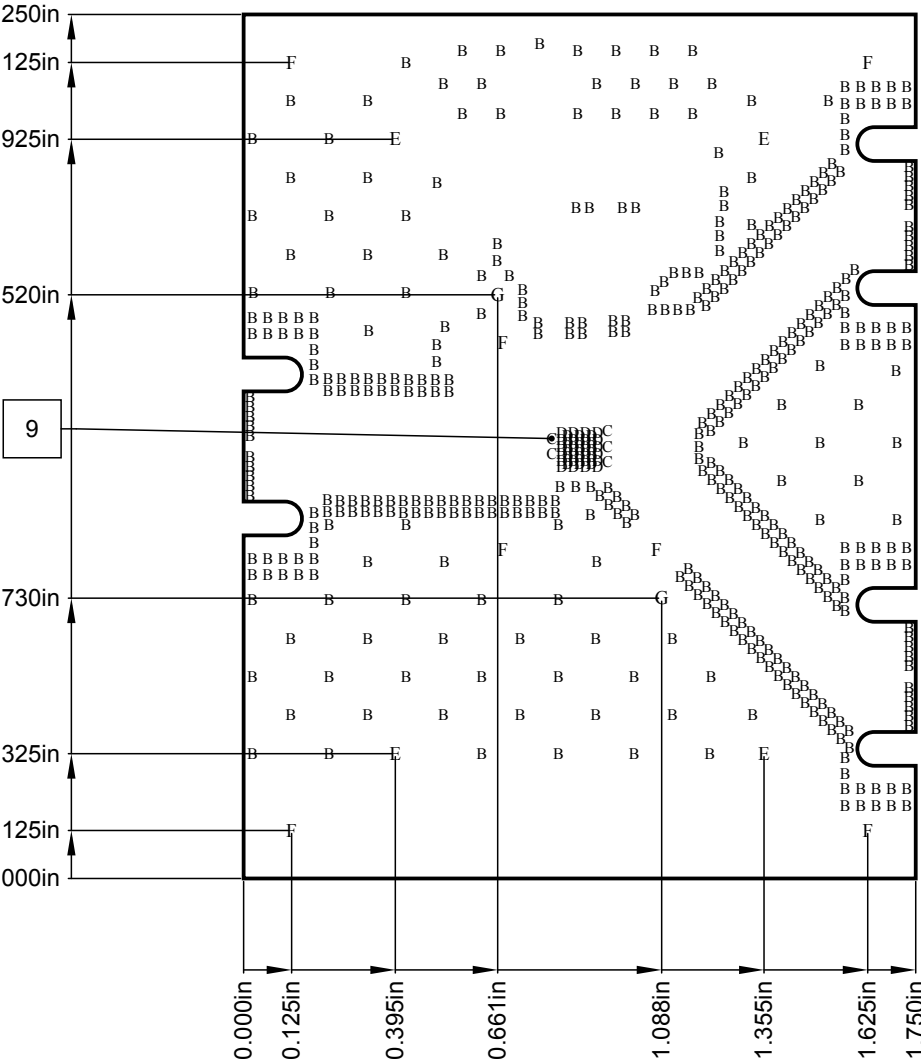



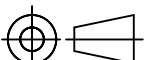
NOTES (UNLESS OTHERWISE SPECIFIED):

1. BOARD FABRICATION METHODS MUST COMPLY WITH:  
FABRICATE IN ACCORDANCE WITH IPC-6018B, per IPC-6011, CLASS 2.
2. ARTWORK FORMAT: GERBER 274X  
GERBER DATA SUPPLIED WITH DESIRED FINAL TRACE WIDTHS. PROCESS  
COMPENSATION TRACE WIDTH ADJUSTMENTS TO BE DONE BY PCB FABRICATOR
3. MATERIAL:  
NUMBER OF LAYERS: 2 LAYERS  
METAL 1 0.5oz. (PLATE TO 1.0oz)  
CORE 1: ROGERS 4003C, .008in. THICK  
METAL 2 0.5oz. (PLATE TO 1.0oz)  
SOLDERMASK TOP: LPI (LIQUID PHOTO-IMAGEABLE), GREEN OR LDI (LASER DIRECT IMAGEABLE), GREEN. MAX FINISH  
THICKNESS OF SOLDERMASK TO BE 0.001in.  
SILKSCREEN TOP: HIGH TEMPERATURE, NON-CONDUCTIVE, WHITE EPOXY BASED INK.
4. FINISH PLATING:  
METAL 1(TOP) AND METAL 2(BOTTOM):  
ELECTROLYTIC FLASH GOLD  
NICKEL PLATE per QQ-N-290, CLASS 1, GRADE G, 200µin. (5µm)  
GOLD PLATE per ASTM B 488, TYPE III, CODE A, 3-10µin. (0.08-0.25µm)
5. FINISHED BOARD THICKNESS: (0.011in) ±0.003IN.
6. COPPER IS PULLED BACK PER GERBER DATA FROM EDGE OF BOARD ON  
METAL 1 (TOP) AND METAL 2 (BOTTOM).
7. TOLERANCE: PC BOARD OUTLINE: ±0.002in.
8. BURRS SHALL NOT EXCEED 0.002in.
- 9 VIA PLATING/FILLING:  
A. ALL 8 MIL (A) VIAS UNDER THE DUT ARE TO BE COPPER-FILLED, OVER-PLATED AND PLANARIZED.  
B. ALL OTHER VIAS ARE TO BE NON-CONDUCTIVE EPOXY FILLED, OVER-PLATED AND PLANARIZED.  
C. ALL OTHER PLATED THRU HOLES TO BE PLATED TO 0.0007in. MIN. THICKNESS.
10. METAL 1(TOP) AND METAL2(BOTTOM) AFTER OVERPLATING AND PLANARIZATION SHALL HAVE A MAX  
ALLOWABLE NEGATIVE FEATURE OF 0.0008in. AND A MAX ALLOWABLE POSITIVE FEATURE OF 0.0003in.
11. FINISHED Cu THICKNESS TO BE 0.0014 ±0.0004in.
12. CONDUCTOR WIDTHS AND SPACING TO BE WITHIN 0.003in. OF CAD DATABASE.
13. SOLDERMASK IN PLATED-THRU HOLES IS ACCEPTABLE AS LONG AS IT DOES NOT EXIST ON BACKSIDE OF BOARD.
14. ALL HOLES TO BE LOCATED WITHIN ±0.003 OF CAD DATABASE.
15. NO VENDOR MARKING OR SERIALIZATION ALLOWED.
16. DELIVER BOARDS BAGGED AS SINGLES
17. NO ELECTRICAL TEST NEEDED.

REVISION HISTORY			
REV	DESCRIPTION	DATE	APPROVAL
A	NEW RELEASE	8/21/17	O.MARRUFO






DUT AREA/COPPER-FILLED



UNLESS OTHERWISE SPECIFIED: DIMENSIONS ARE IN INCHES		SAP NO. 285510			
TOLERANCES ..XX = ±.01 ..XXX = ±.005 ..XXXX = ±.0010  ANGLES = ± 0.5°		APPROVAL AND RELEASE RECORDS MAINTAINED IN PDE		DATE	
		DESIGNER	O.MARRUFO	8/21/17	
		ENGR.	B.KIM	8/21/17	
INTERPRET DRAWING PER ANSI/ASME Y14.5 - 2009		MFG	PDE CONTROLLED		
		MANAGER			
		Q.A.			
THIRD ANGLE PROJECTION		CAGE CODE	1CVM1		
DO NOT SCALE DRAWING					
TITLE:  PCB, QPF4006 EVB					
SIZE  B		DWG. NO.  QPF4006-4000			REV.  A
SCALE: 1:1				SHEET 1 OF 4	

THIS DOCUMENT IS CONFIDENTIAL AND REPRESENTS PROPRIETARY INFORMATION, THE PROPERTY OF QORVO AND SHALL NOT BE REPRODUCED IN ANY MANNER NOR USED FOR ANY PURPOSE WHATSOEVER, EXCEPT AS SPECIFIED IN WRITING BY QORVO

Layer Stack Legend

	Material	Layer	Thickness	Dielectric	Material Type
		SILKSCREEN_TOP			Legend
	Surface Material	SOLDERMASK_TOP	0.4mil		Solder Resist
	Copper	METAL1_TOP	0.7mil		Signal
	Core		8.0mil	ROGERS 4003C	Dielectric
	Copper	METAL2_BOT	0.7mil		Signal
Total thickness: 9.8mil					

Drill Table

SYMBOL	COUNT	HOLE SIZE	PLATED	VIA / PAD	DRILL LAYER PAIR
C	5	6.00(0.15)	Plated	Via	METAL1_TOP - METAL2_BOT
D	39	8.00(0.20)	Plated	Via	METAL1_TOP - METAL2_BOT
B	443	15.00(0.38)	Plated	Via	METAL1_TOP - METAL2_BOT
G	2	63.00(1.60)	Non-Plated	Pad	METAL1_TOP - METAL2_BOT
F	7	100.00(2.54)	Plated	Pad	METAL1_TOP - METAL2_BOT
E	4	120.00(3.05)	Plated	Pad	METAL1_TOP - METAL2_BOT

THIS DOCUMENT IS CONFIDENTIAL AND REPRESENTS PROPRIETARY INFORMATION, THE PROPERTY OF QORVO AND SHALL NOT BE REPRODUCED IN ANY MANNER NOR USED FOR ANY PURPOSE WHATSOEVER, EXCEPT AS SPECIFIED IN WRITING BY QORVO

SIZE	CAGE CODE	DWG. NO.	REV.
B	1CVM1	QPF4006-4000	A
SCALE:	1:1	SHEET 2 OF 4	

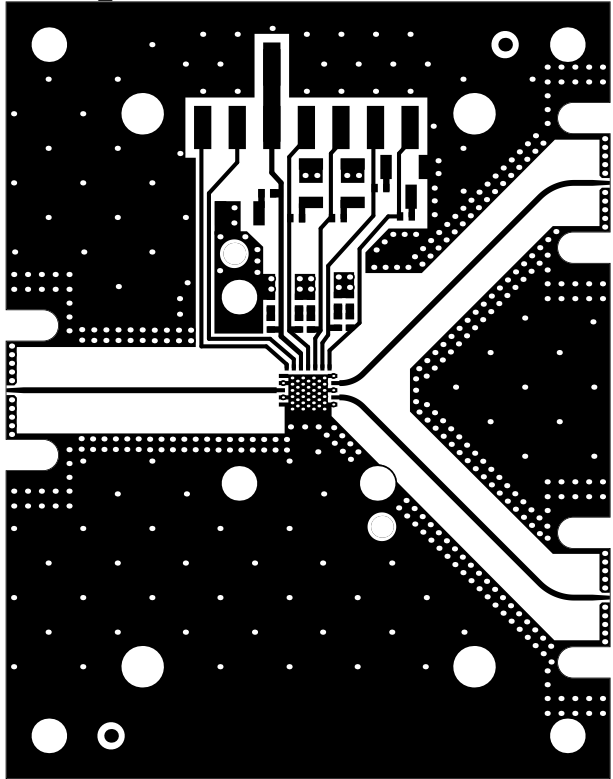
4

3

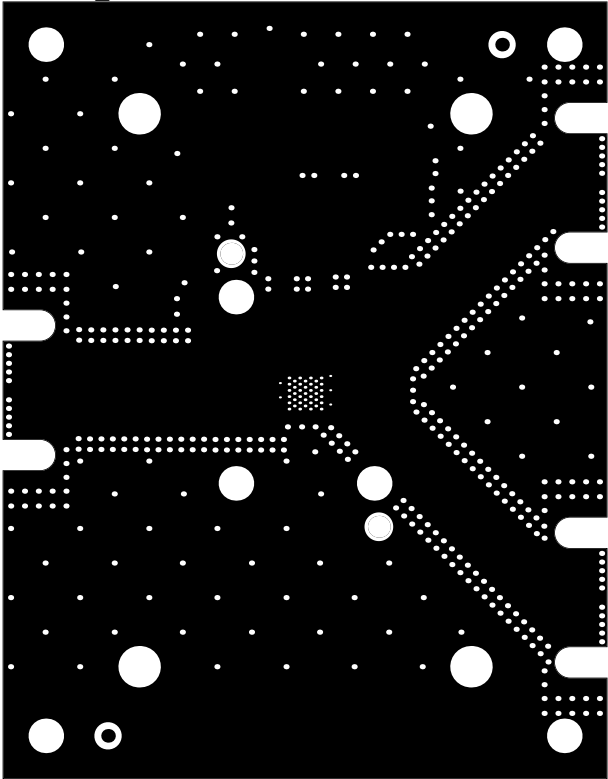
2

1

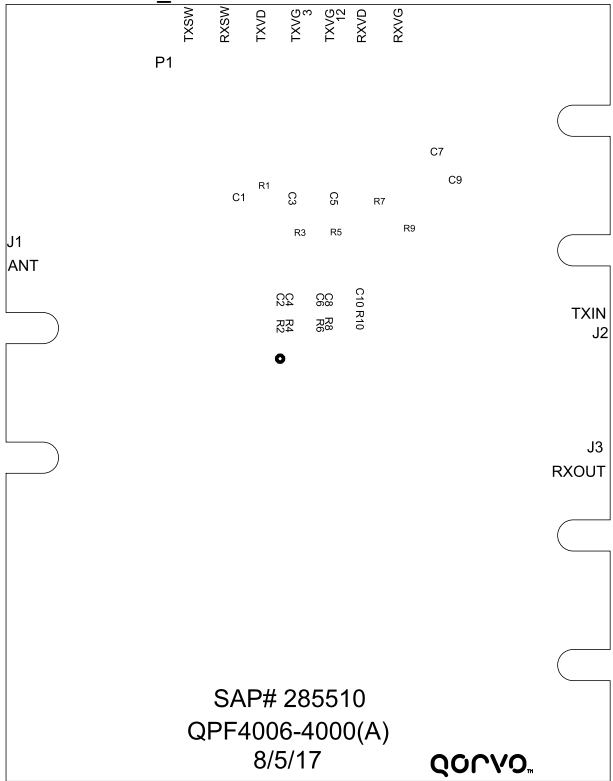
METAL1\_TOP



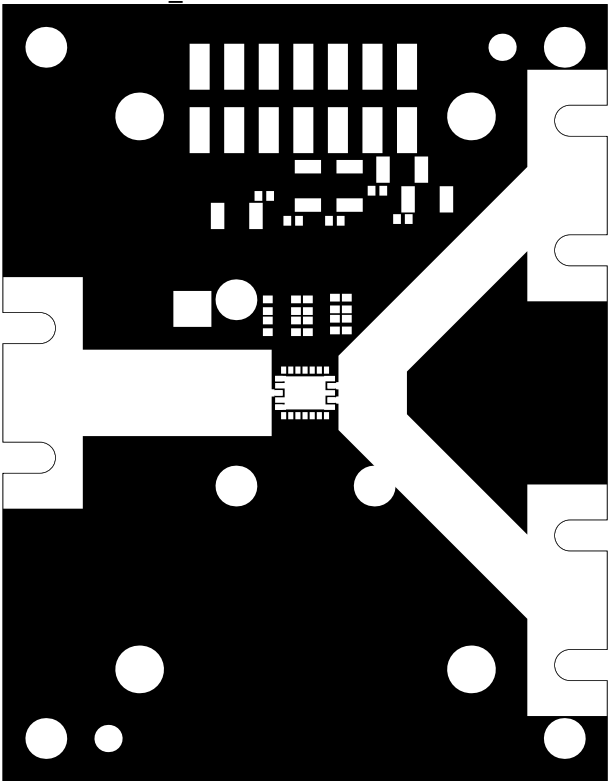
METAL2\_BOT



SILKSCREEN\_TOP



SOLDERMASK\_TOP



THIS DOCUMENT IS CONFIDENTIAL AND REPRESENTS  
PROPRIETARY INFORMATION, THE PROPERTY OF QORVO  
AND SHALL NOT BE REPRODUCED IN ANY MANNER  
NOR USED FOR ANY PURPOSE WHATSOEVER,  
EXCEPT AS SPECIFIED IN WRITING BY QORVO

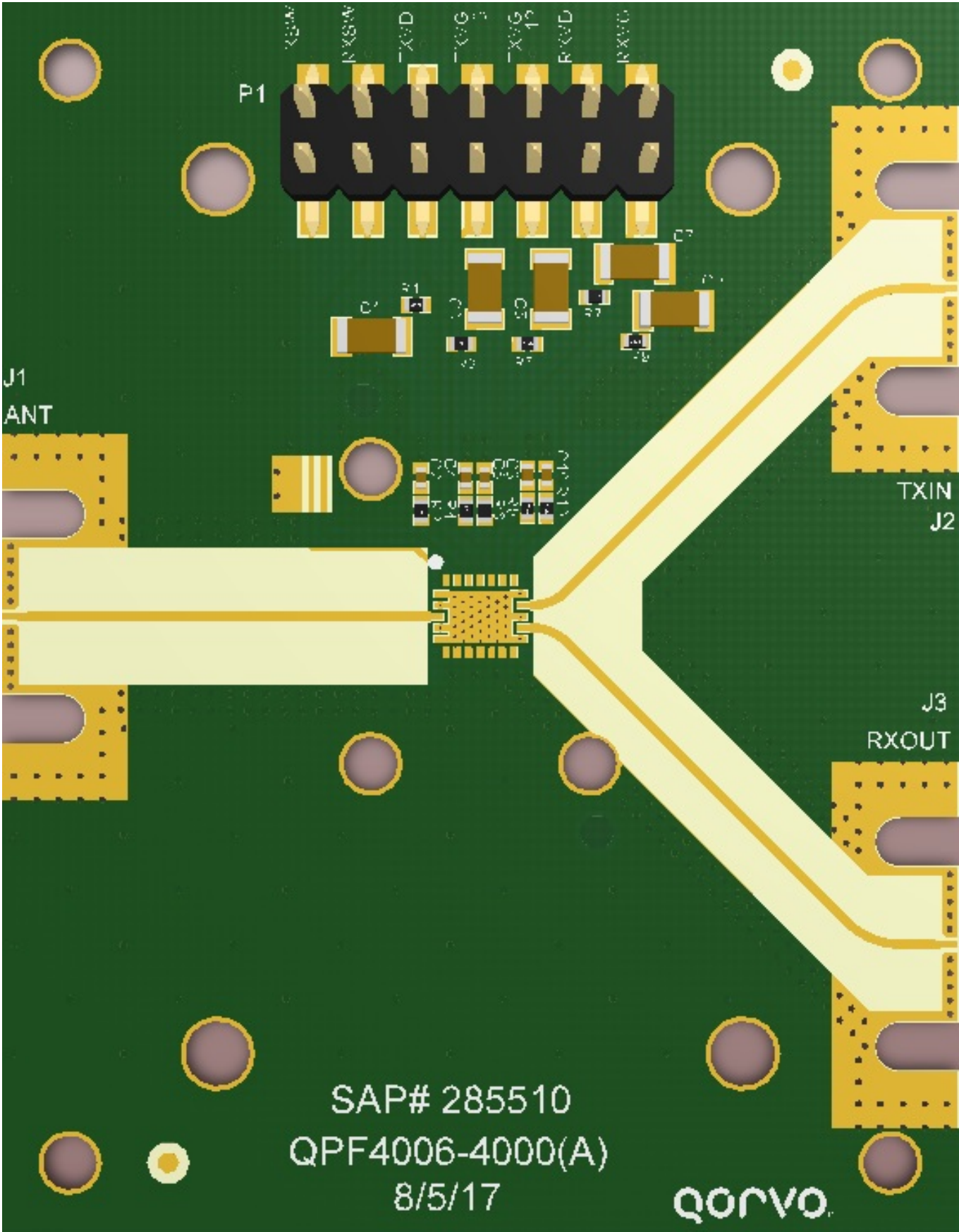
SIZE	CAGE CODE	DWG. NO.	REV.
B	1CVM1	QPF4006-4000	A
SCALE: 1:1	SHEET 3 OF 4		

4

3

2

1



THIS DOCUMENT IS CONFIDENTIAL AND REPRESENTS  
PROPRIETARY INFORMATION, THE PROPERTY OF QORVO  
AND SHALL NOT BE REPRODUCED IN ANY MANNER  
NOR USED FOR ANY PURPOSE WHATSOEVER,  
EXCEPT AS SPECIFIED IN WRITING BY QORVO

SIZE	CAGE CODE	DWG. NO.	REV.
B	1CVM1	QPF4006-4000	A
SCALE:	1:1	SHEET 4 OF 4	

