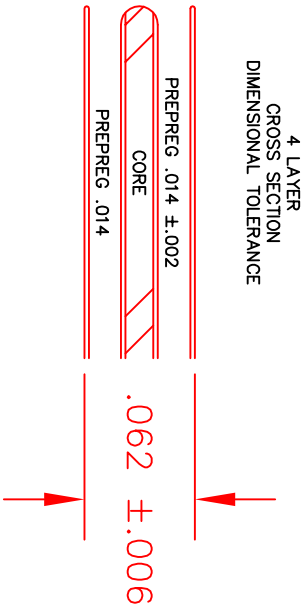
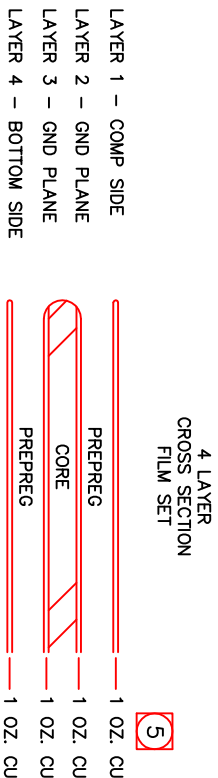
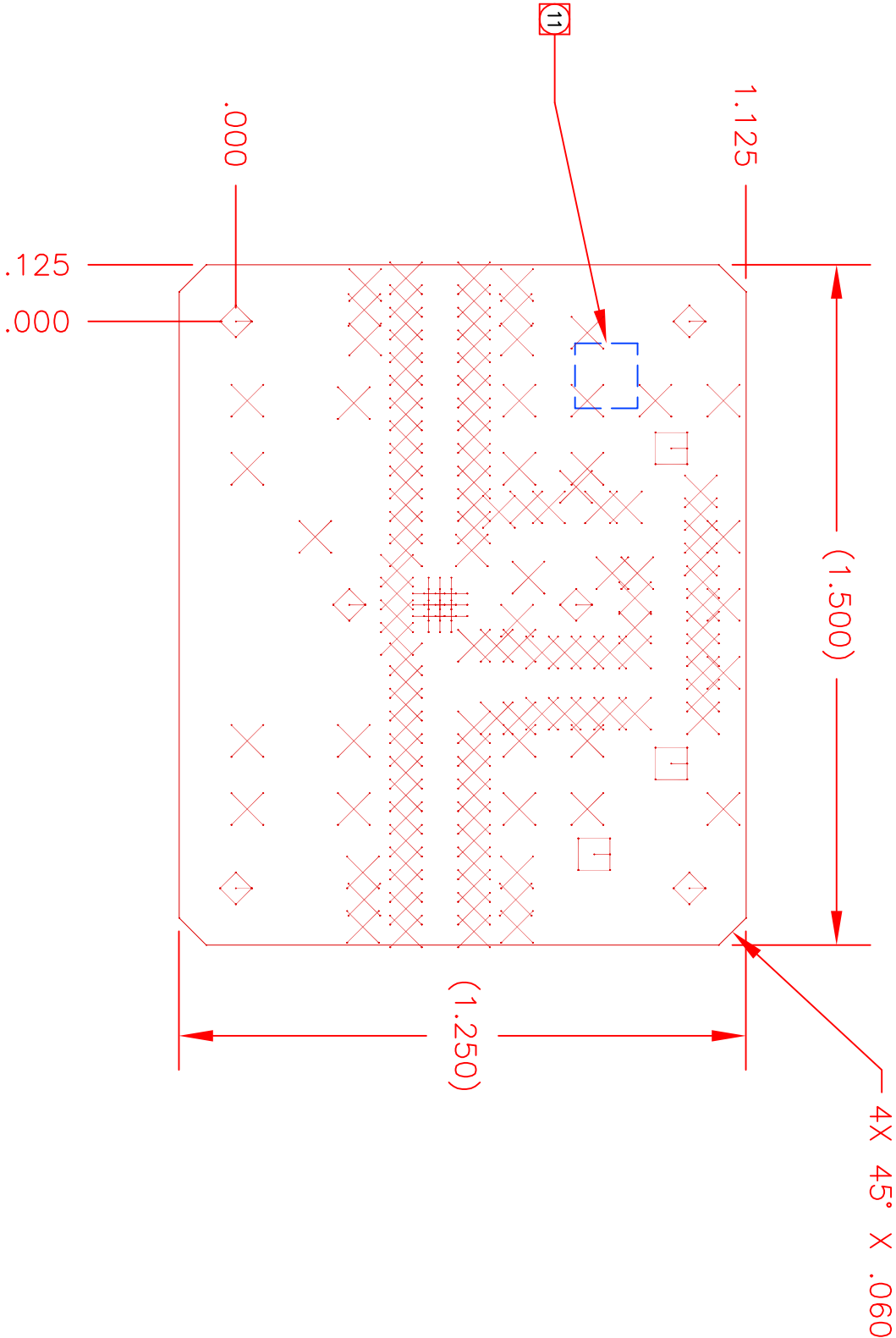


NOTES UNLESS OTHERWISE SPECIFIED:

- FABRICATE IAW IPC-6012, CLASS 2, CURRENT REVISION.
- BOARD SHALL MEET THE INSPECTION CRITERIA OF IPC-A-600 CLASS 2, CURRENT REVISION.
- USE ARTWORK 1130505AW CURRENT REV.
- MATERIAL: NELCO N4000-13, RoHS COMPLIANT. SEE LAYER STACK-UP BELOW.
- FINISHED WEIGHT OF ALL COPPER LAYERS SHALL BE 1 OZ. PER SQUARE FOOT NOMINAL.
- DESMEAR HOLES AND VIAS.
- FINISH: ELECTROLESS NI IMMERSION AU (ENIG). GOLD PLATING THICKNESS TO BE BETWEEN 3 – 8 MICROINCHES.
- SILKSCREEN TOP SIDE ONLY WITH NONCONDUCTIVE EPOXY INK. COLOR SHALL BE A CONTRASTING INK WITH RESPECT TO SOLDERMASK COLOR. DISTORTION OF SILKSCREEN IS ACCEPTABLE OVER TRACES. REMOVE EPOXY INK FROM SOLDER LANDS.
- TANGENCY IS ACCEPTABLE.
- REMOVAL OF NON-FUNCTIONAL PADS ON INTERNAL LAYERS IS ACCEPTABLE.
- SUPPLIER LOT NUMBER/DATE CODE (NO LOGO) SHALL ONLY BE SILKSCREENED WITH NON-CONDUCTIVE EPOXY INK IN APPROX. LOCATION SHOWN.
- CALCULATE IMPEDANCE USING GCPW MODEL. ADJUST RF TRACE WIDTH TO MEET 50 OHMS +/- 5%.
- PROVIDE ONE THRU BOARD EACH BUILD FROM THAT BUILD. SEE PAGE 2. USE THRU GERBER.



COMPONENT SIDE



HOLE SCHEDULE (ALL PLATED THRU DIAMETERS ARE AFTER PLATING)			
SYM	DESCRIPTION	PLATED THRU	QTY
+	Ø.006 +.003/--.006 THRU	YES	9
×	Ø.020 ±.003 THRU	YES	126
□	Ø.060 ±.003 THRU	YES	3
◇	Ø.102 ±.003 THRU	YES	6

QTY	PEN	DASH	NO	ITEM	NO	PART OR IDENT	NO	CAGE CODE	NOMENCLATURE OR DESCRIPTION	SPEC/STD
PARTS LIST OR MATERIAL										
UNLESS OTHERWISE SPECIFIED, DIMENSIONS ARE IN INCHES.										
1X DEC. ± .02 TOLERANCE PER ASME Y14.5 2018										
MATERIAL: 4										
5R K. KEISEN 5-13-15										
CHK S. PANICCA 5-13-15										
MFG										
FINAL PROTECTIVE FINISH: 7										
CONTR NO.										
SIZE CAGE CODE 1130505PC REV										
D 14482 -										
SCALE NONE W/O NO. SHEET 1 OF 2										

qorvo. SAN JOSE, CALIFORNIA

PRINTED CIRCUIT BOARD  
QPA9119