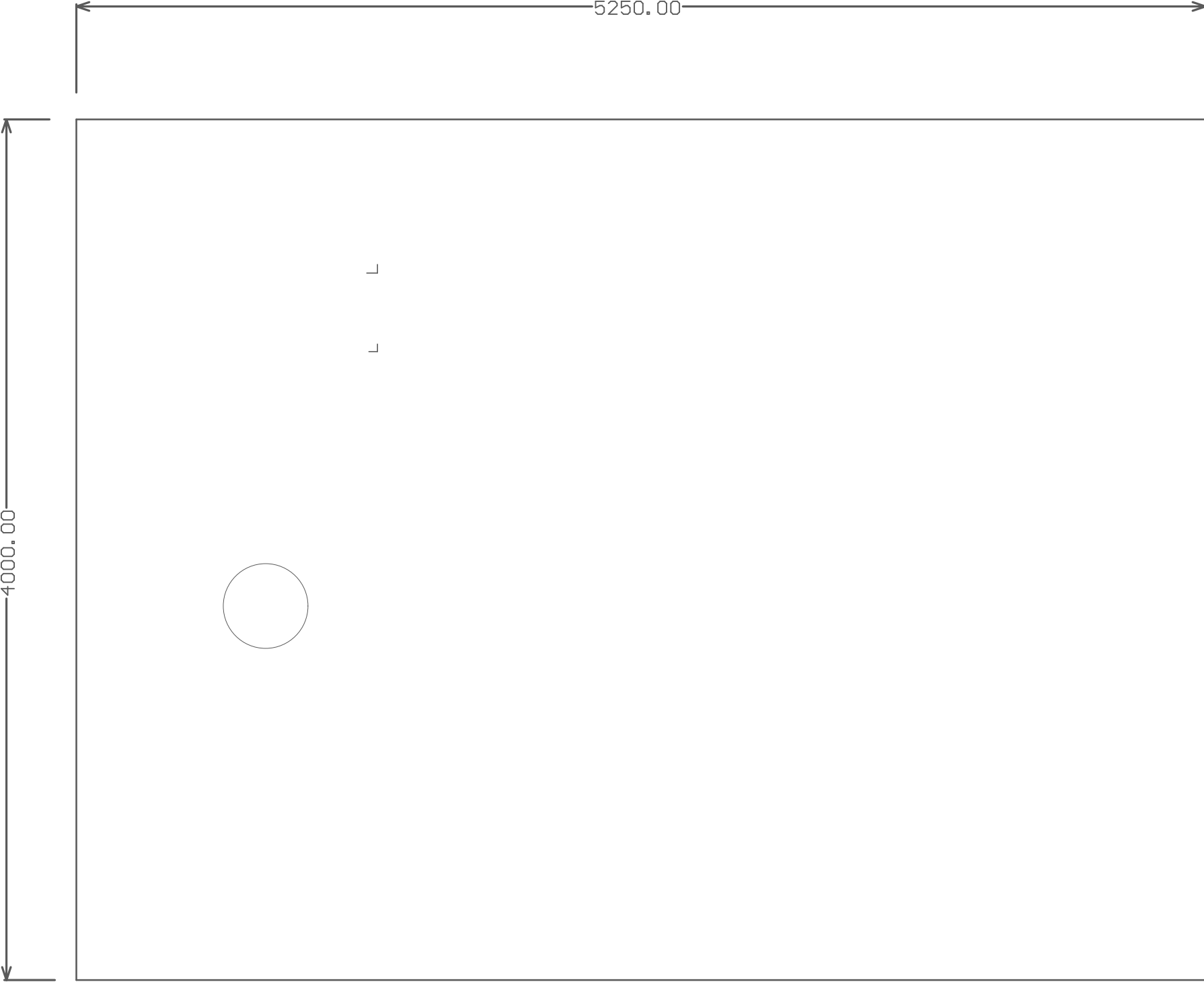
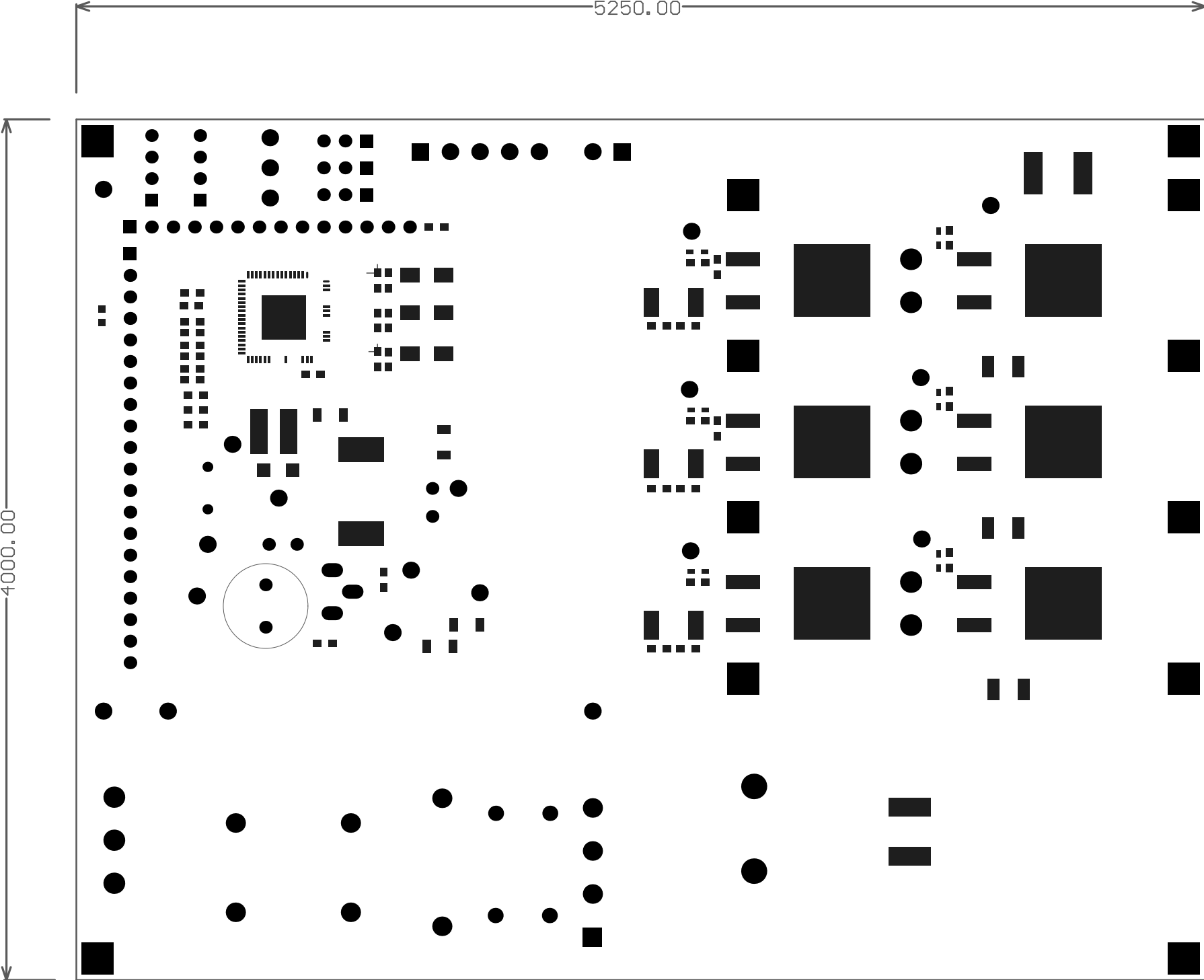
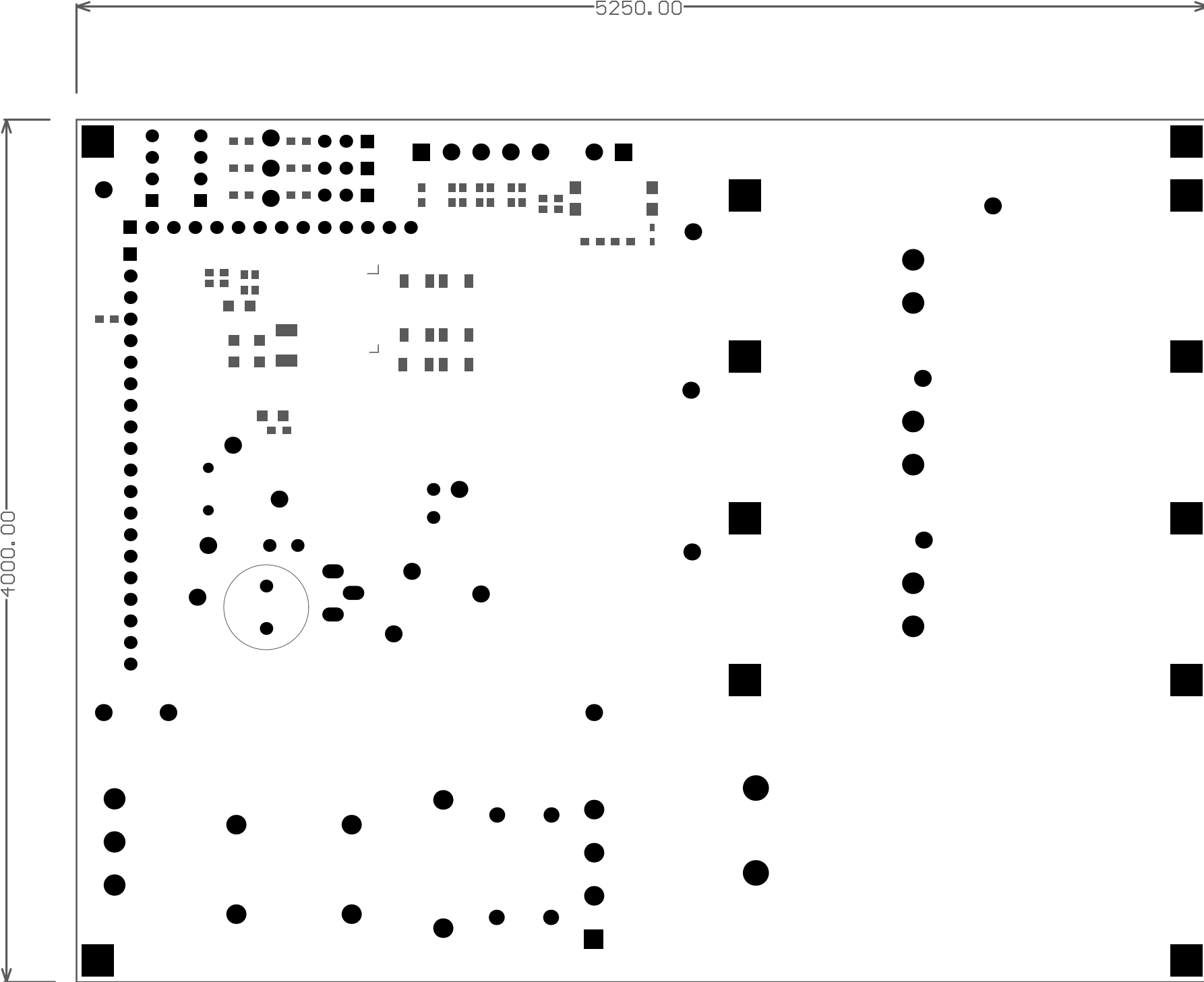


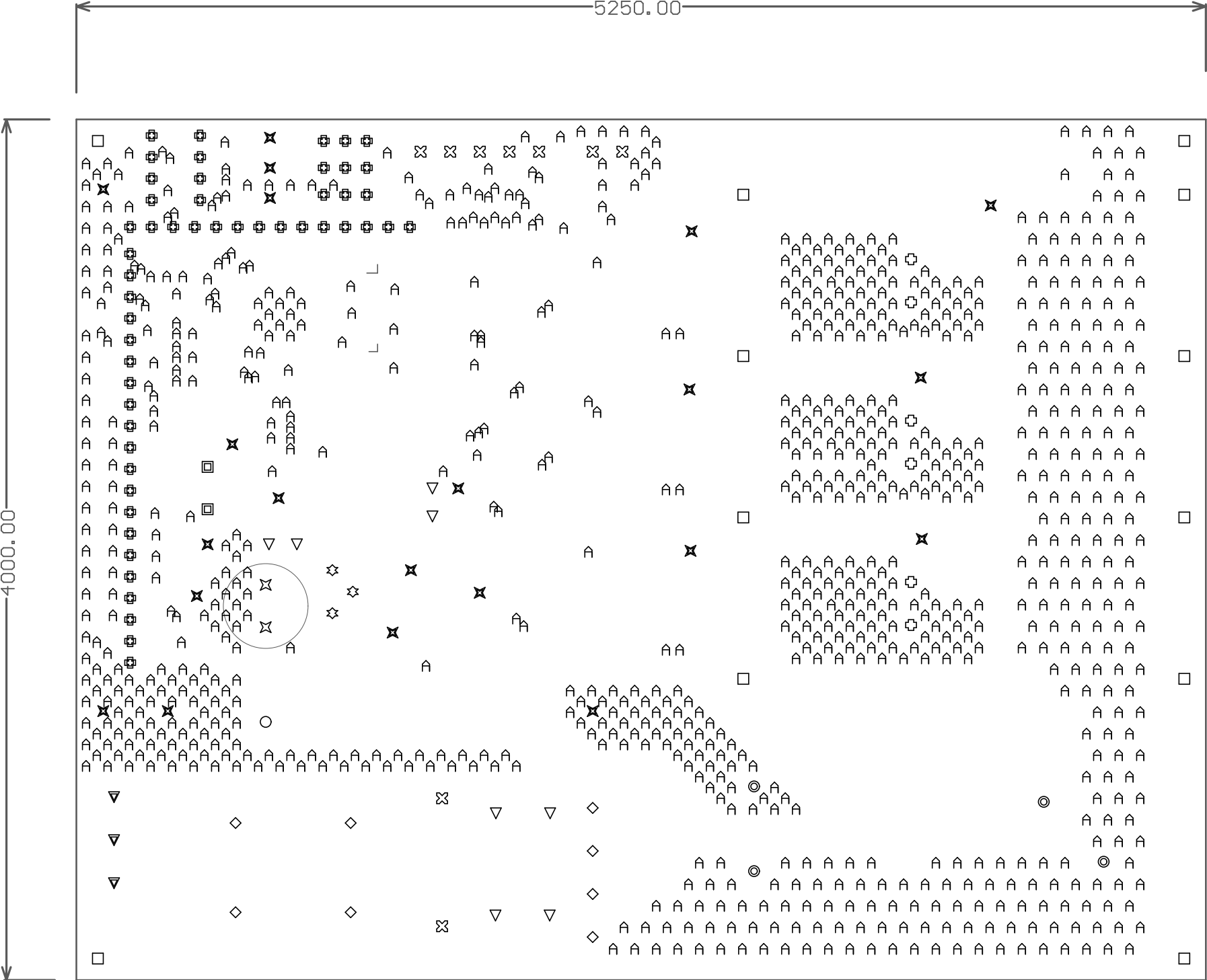
4000.00

The image shows a detailed PCB layout for the PAC5256EVK1 evaluation kit. The board is populated with various components, including a central microcontroller (PAC5256), several DACs (DAC1, DAC2, DAC3), ADCs (ADC1, ADC2, ADC3), and a Hall sensor (HALL1). The layout includes a top section with DACs and ADCs, a middle section with the microcontroller and its associated components, and a bottom section with a large circular component (likely a sensor or actuator) and a power supply section. The board is populated with numerous surface-mount components, including resistors, capacitors, and integrated circuits. The layout is labeled with component values and part numbers, such as 'PAC5256EVK1', 'PACPCB006-002', and 'active-semi'.









Symbol	Hit Count	Finished Hole Size	Plated	Hole Type	Physical Length	Rout Path Length
A	887	12.00mil (0.305mm)	PTH	Round	-	-
○	1	25.00mil (0.635mm)	PTH	Round	-	-
◻	2	27.56mil (0.700mm)	PTH	Round	-	-
✕	2	35.43mil (0.900mm)	PTH	Round	-	-
⊕	51	36.00mil (0.914mm)	PTH	Round	-	-
▽	8	39.37mil (1.000mm)	PTH	Round	-	-
☆	3	40.00mil (1.016mm)	PTH	Round	-	-
⊗	9	47.24mil (1.200mm)	PTH	Round	-	-
⊕	6	55.12mil (1.400mm)	PTH	Round	-	-
◇	8	59.06mil (1.500mm)	PTH	Round	-	-
✕	21	63.00mil (1.600mm)	PTH	Round	-	-
▽	3	70.87mil (1.800mm)	PTH	Round	-	-
◎	4	86.61mil (2.200mm)	PTH	Round	-	-
◻	12	125.00mil (3.175mm)	PTH	Round	-	-
	1017 Total					

