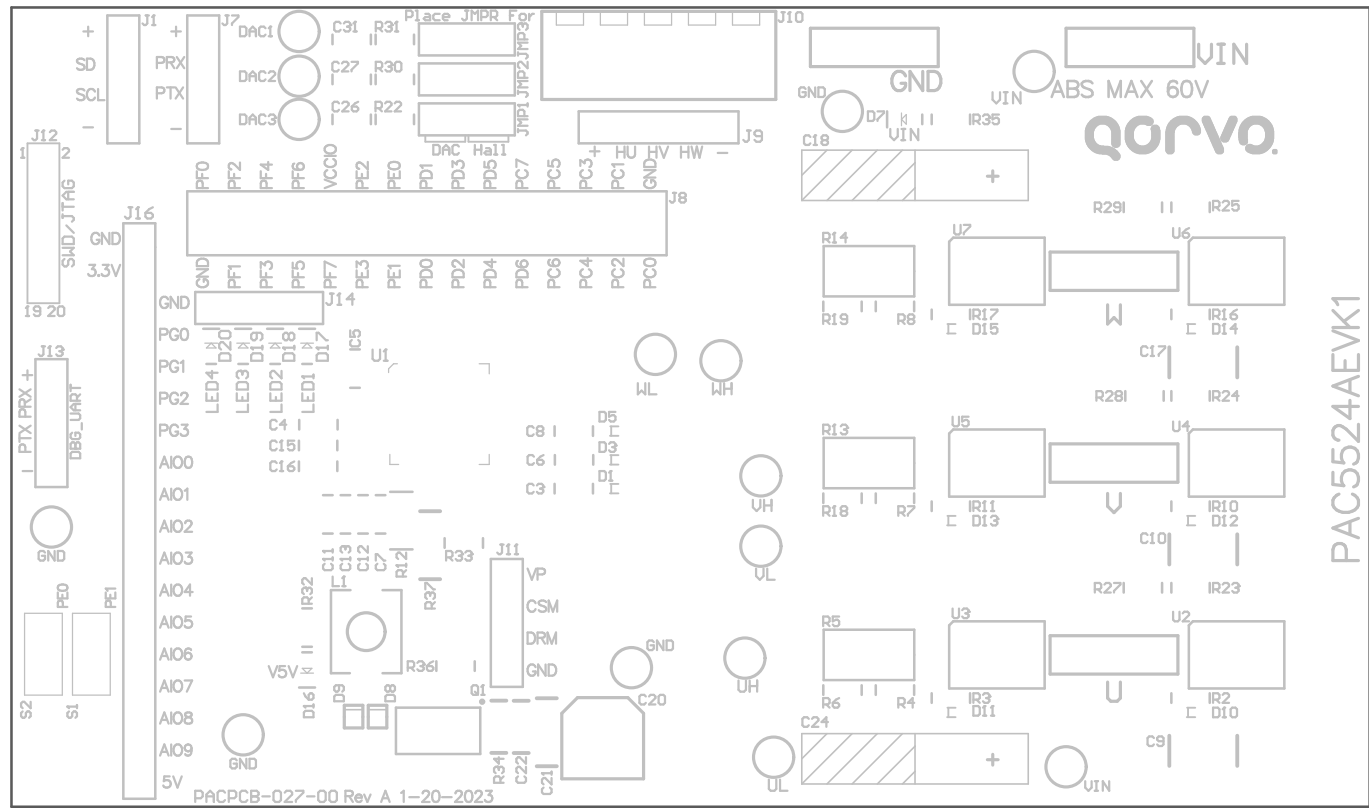


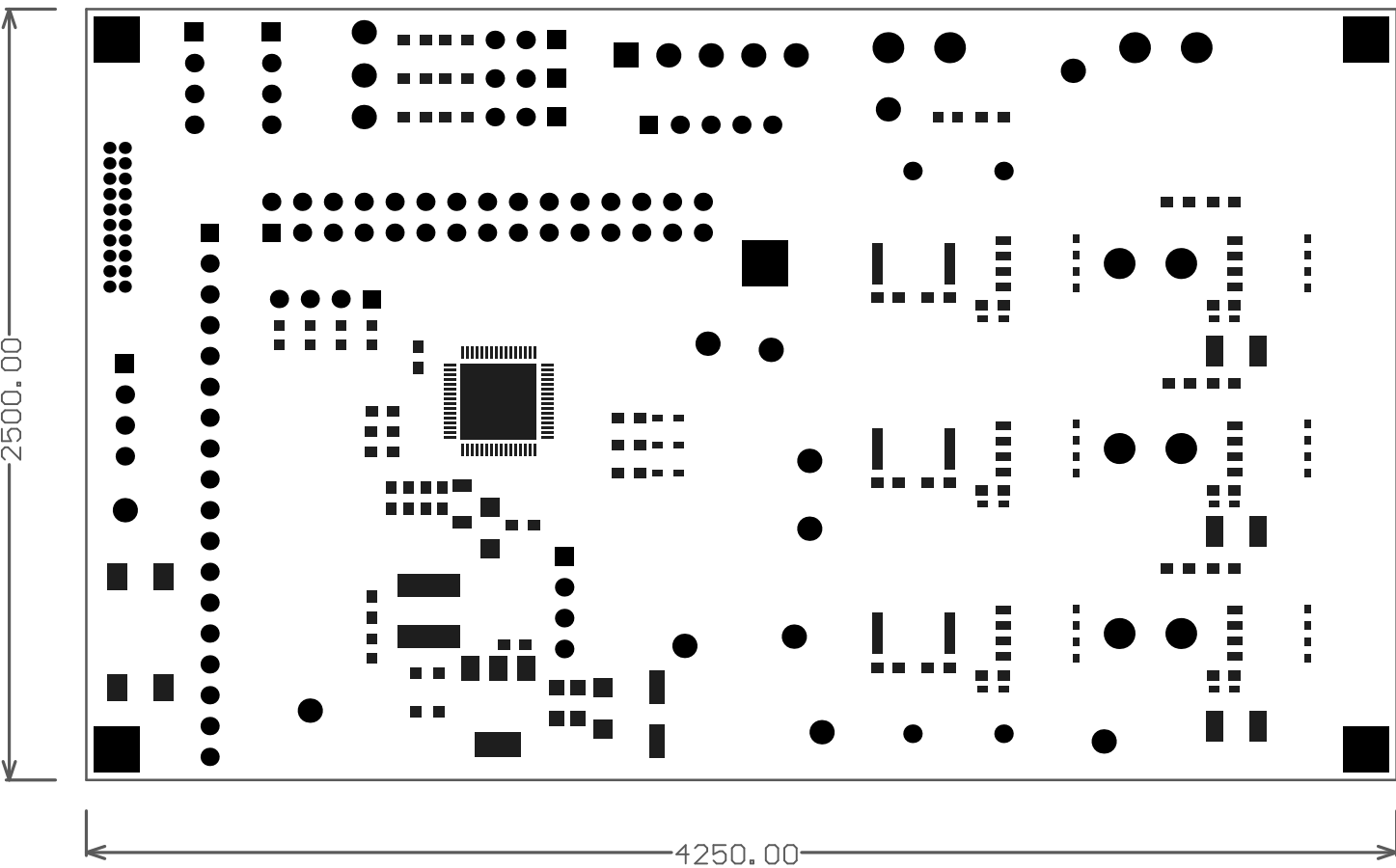
2500.00

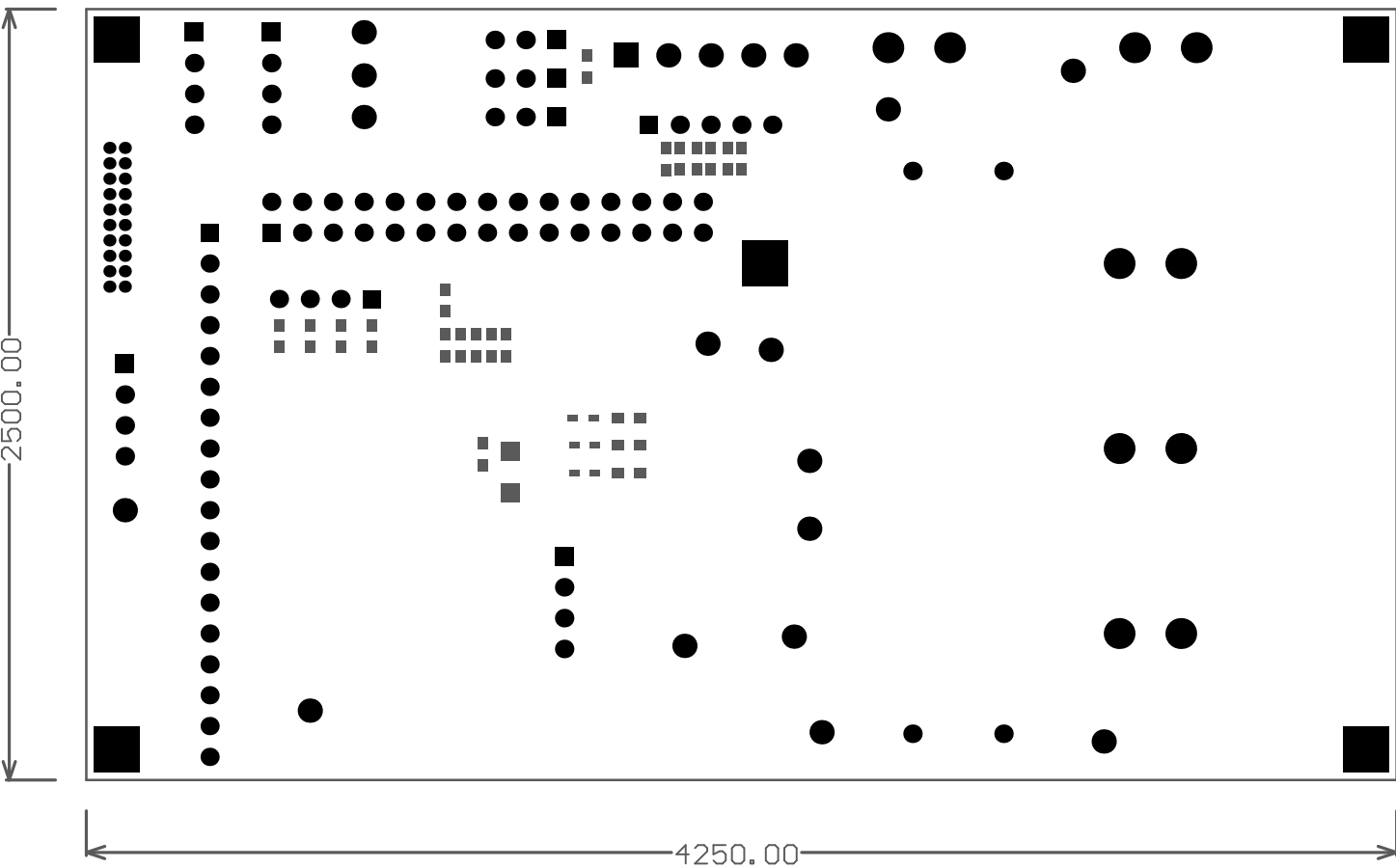


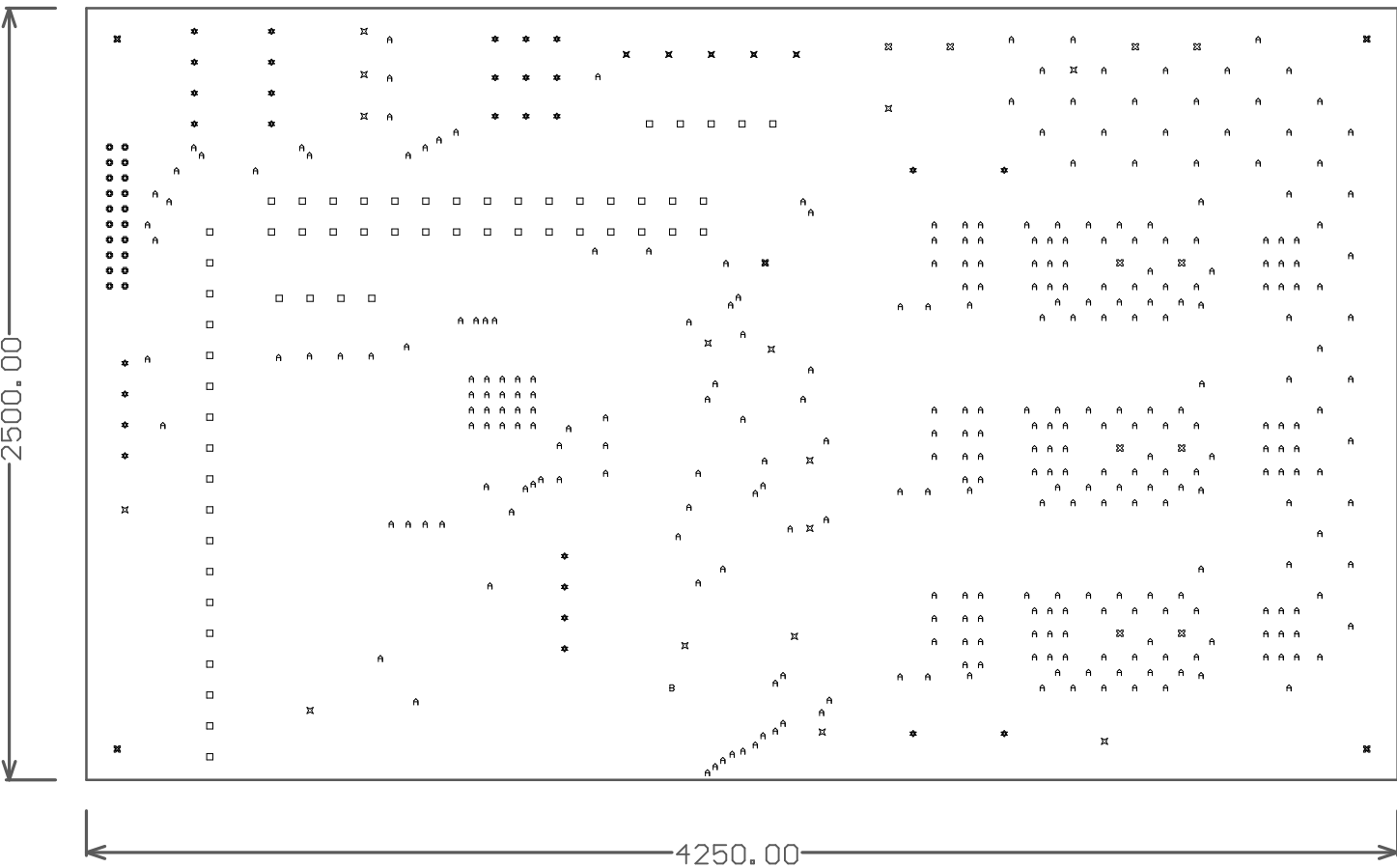
4250.00

PAC5524AEVK1









| Symbol | Count | Hole Size | Plated | Hole Type |
|--------|-----------|---------------------|--------|-----------|
| B | 1 | 25.00mil (0.635mm) | PTH | Round |
| X | 5 | 47.24mil (1.200mm) | PTH | Round |
| ⌘ | 5 | 125.00mil (3.175mm) | PTH | Round |
| ⌘ | 10 | 55.12mil (1.400mm) | PTH | Round |
| ⌘ | 15 | 63.00mil (1.600mm) | PTH | Round |
| ⊕ | 20 | 25.59mil (0.650mm) | PTH | Round |
| ⊗ | 29 | 36.00mil (0.914mm) | PTH | Round |
| □ | 57 | 35.43mil (0.900mm) | PTH | Round |
| A | 331 | 12.00mil (0.305mm) | PTH | Round |
| | 473 Total | | | |

