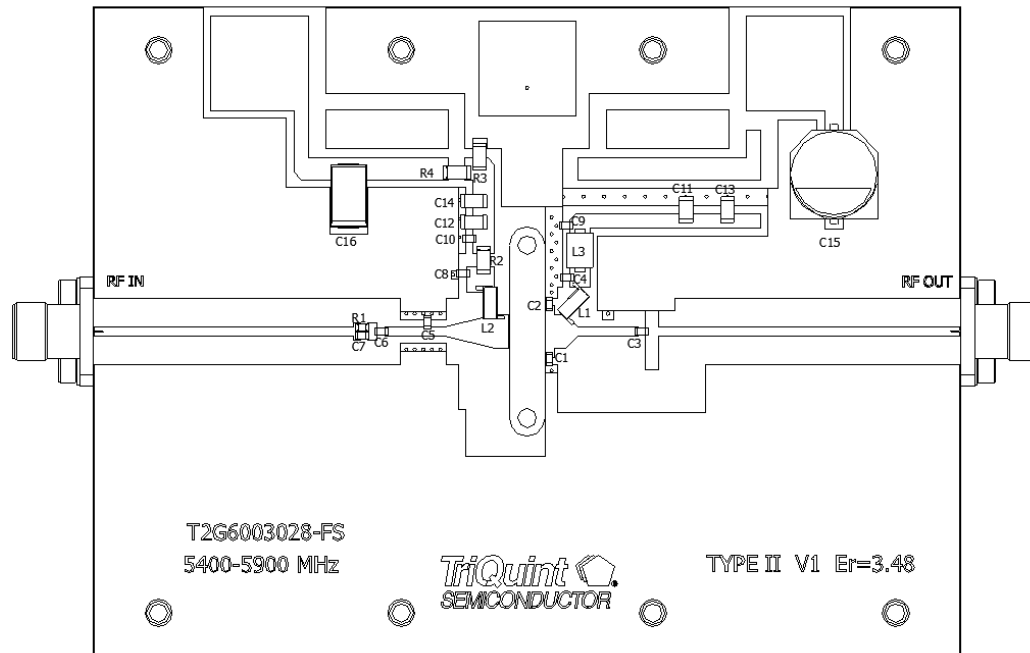


T2G6003028-FS/FL BOM



PARTS LIST

ITEM	QTY	PART NUMBER	DESCRIPTION	REF DES
1	1	ATC600S	0.2pF, (ATC)	C2
2	2	8P80 nH_D	(COILCRAFT)	L1, L2
3	5	ATC600S	3pF (ATC)	C3, C4, C6, C7, C8
4	1	ATC600S	0.4pF (ATC)	C5
5	1	CR0604-16w-97R6FT	97.6 Ohm (VENKEL)	R1
6	1	37C0064	4.7 Ohm 1/8 W(NEWARK)	R2
7	1	TNPW1206330RBT9ET1-E3	330 Ohm (NEWARK)	R3
8	1	CRCW120651R0FKEA	50 Ohm (ATC)	R4
9	2	AVX06035C22KAT2A	220pF, 50V, 0603 (AVX)	C9, C10
10	2	VJ1206Y222KXA	2200pF (VITRAMON)	C11, C12
11	2	VJ1206Y223KXA	22000pF (VITRAMON)	C13, C14
12	1	EMVY500ADA221MJA0G	220uF 50V	C15
13	1	541-1325	1.0uF, ALLIED	C16
14	1	28F0121-0SR-10	10A, 48 Ohm, FERRIT	L3
15	1	ATC600S	0.3pF (ATC)	C1